




# SW-MOTECH KFT.06.921.70100/S Tracer Kit Instruction Manual

[Home](#) » [SW-MOTECH](#) » SW-MOTECH KFT.06.921.70100/S Tracer Kit Instruction Manual 

## Contents

- 1 SW-MOTECH KFT.06.921.70100/S Tracer Kit
- 2 Product Information
- 3 Product Usage Instructions
- 4 MOUNTING INSTRUCTIONS
  - 4.1 PRO side carrier
- 5 GENERAL INFORMATION
- 6 PRODUCT SPECIFIC INFORMATION
- 7 PARTS LIST
- 8 MOUNTING
- 9 Adapter kit for PRO side carrier -TRAX ADV/ION/EVO
  - 9.1 GENERAL INFORMATION
- 10 PARTS LIST
  - 10.1 TRAX ADVENTURE ALU-BOX
- 11 GENERAL INFORMATION
- 12 SECURITY
- 13 CARE
- 14 PARTS LIST
- 15 TECHNICAL DETAILS
- 16 LID AND LOCK CYLINDER SET
- 17 Documents / Resources





## Product Information

The product is manufactured by SW-MOTECH GmbH & Co. KG and is made in China. The product's model numbers are KFT.06.921.70100/S, KFT.06.921.30000/B, KFT.00.152.35100, ALK.00.733.10000L/S, ALK.00.733.10000R/S, ALK.00.165.16303, and QLS.00.095.10000/B. The product code for the packaging is VP.EKB.QLS.02.

## Product Usage Instructions

- **Step 1:** Identify the model number of your product.
- **Step 2:** Locate the appropriate user manual for your product.
- **Step 3:** Review the user manual for installation instructions.
- **Step 4:** Follow the installation instructions carefully.
- **Step 5:** If you encounter any issues during installation or usage, refer to the troubleshooting section of the user manual.
- **Step 6:** For additional support or assistance, contact the manufacturer's customer service department.

## MOUNTING INSTRUCTIONS

**Revision:** DO

**Datum / Date:** 02 – 2021

### PRO side carrier

Thank you for choosing this premium product from SW-MOTECH. Please visit our webshop for additional information, such as application charts and PDF mounting instructions. Any other documents that may be required (e.g. ABE certifications), are also available for download at our webshop. Installation and/or maintenance of this product require good technical understanding! For your own safety SW-MOTECH recommends having installation and/or servicing carried out by a specialist workshop! SW-MOTECH assumes no liability for damage caused by improper installation and/or maintenance work! Carefully follow all the directions given in the mounting instructions and pay attention to all relevant information in the vehicle manual during assembly. Nonconformance can lead to vehicle damage or even endanger the driver! These mounting instructions are written based on our current state of knowledge. Legal requirements for accuracy do not exist. This product was developed for vehicles in their factory setting. Compatibility with original accessory parts or other manufacturers' accessory parts is not guaranteed. Furthermore, BEFORE installing this product, make sure that all moving parts (e.g. the chain) are in the original state of maintenance. Installed accessories can change the driving behaviour and/or stability of your

vehicle.

## GENERAL INFORMATION

Observe the country-specific regulations concerning vehicle registration/ operation as well as TOV regulations if applicable. If required, register installed parts in the vehicle documents through an appropriate inspection authority.

**PREPARATION:** Read the mounting instructions carefully and make sure that all items of the parts list are included. Make sure that your vehicle is parked safely and cannot fall over. Turn off the engine and remove the ignition key. Let the motor/exhaust cool off if necessary. Disconnect the vehicle battery when working on the electrical system. Use appropriate tools. Have another person to help you.

**MOUNTING:** All parts and connections removed from the vehicle must be reinstalled in accordance with the vehicle manufacturers' specifications or replaced by parts delivered by SW-MOTECH. Secure all threads, unless otherwise specified, with medium-strength liquid thread locker. Torque specifications undefined by SW-MOTECH must be obtained from the vehicle manufacturer or by a specialist workshop!

**FUNCTION CHECK:** After installation make sure that all parts and connections previously removed are properly replaced. Also make sure that no moving parts are obstructed and no function of the vehicle is hindered in any way. Cables and hoses must not rub and/or be pinched. Before starting to ride, perform a comprehensive check of all functions. After the first 50 km and then at regular intervals, check the tightening torque of all screw connections and the proper fit of the product.

## PRODUCT SPECIFIC INFORMATION

**ATTENTION:** The indicated maximum load is inclusive the weight of case/luggage and adapter kit! The maximum vehicle load specified by the manufacturer must not be exceeded!

The side carriers are designed exclusively for the use of SW-MOTECH adapter kits. Dismount the side carriers when travelling without cases/luggage. Always use the side carriers in pairs.

**ATTENTION:** Make sure that after attaching the luggage to the vehicle it is not in the exhaust flow! Dangers of burns!

**Packed by:**

**Date of packaging:**

**SW-MOTECH GmbH & Co. KG**

Ernteweg 7-10

35282 Rauschenberg

Germany

Tel. / phone+ 49 (0)6425

8168 – 050 Fax

fax+ 49 (0)6425 / 8168 – 10

[info@sw-motech.com](mailto:info@sw-motech.com)

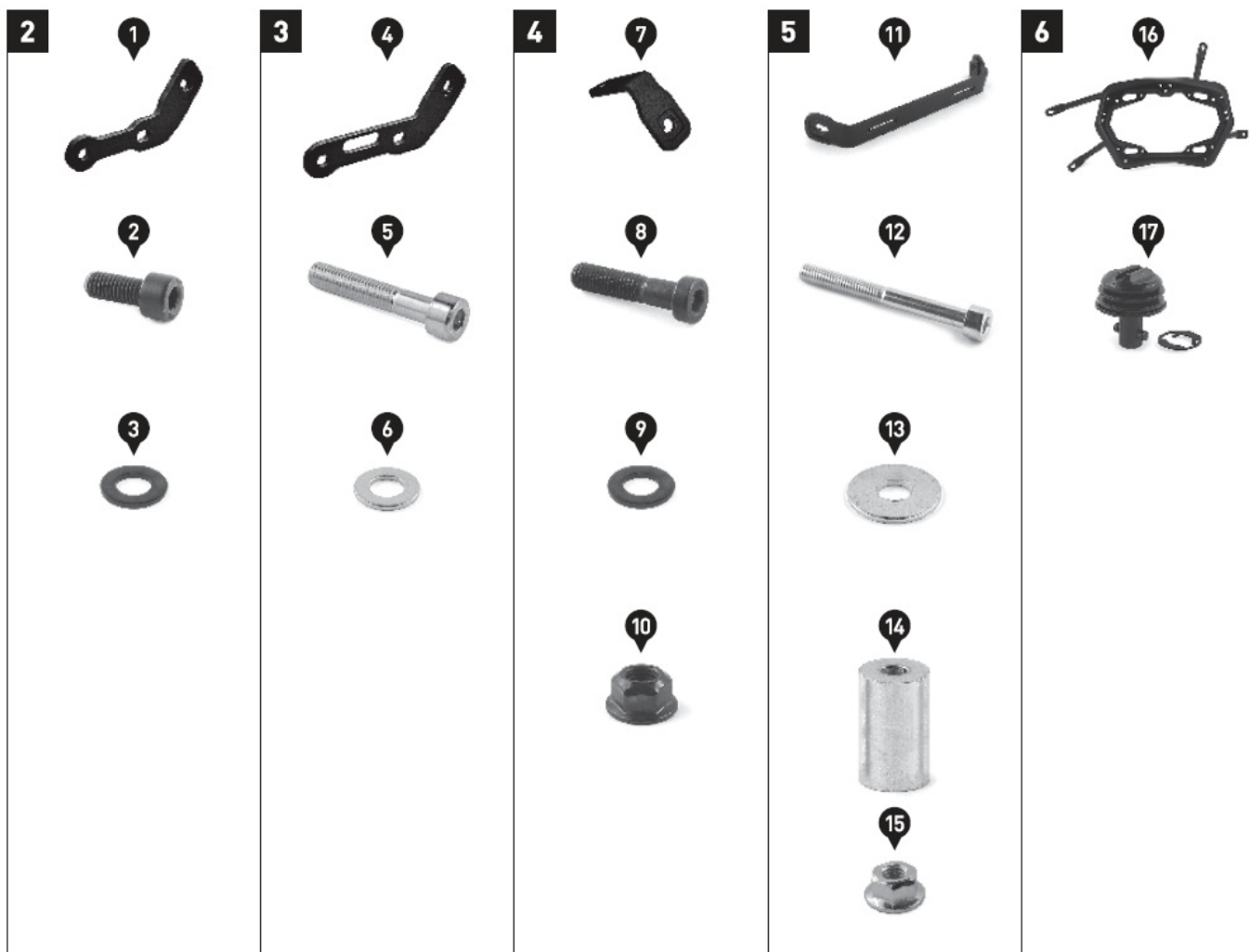
[www.sw-motech.com](http://www.sw-motech.com)

Technische und Design-Änderungen vorbehalten. Errors and omissions excepted. Technical and design modifications are subject to change .

## PARTS LIST

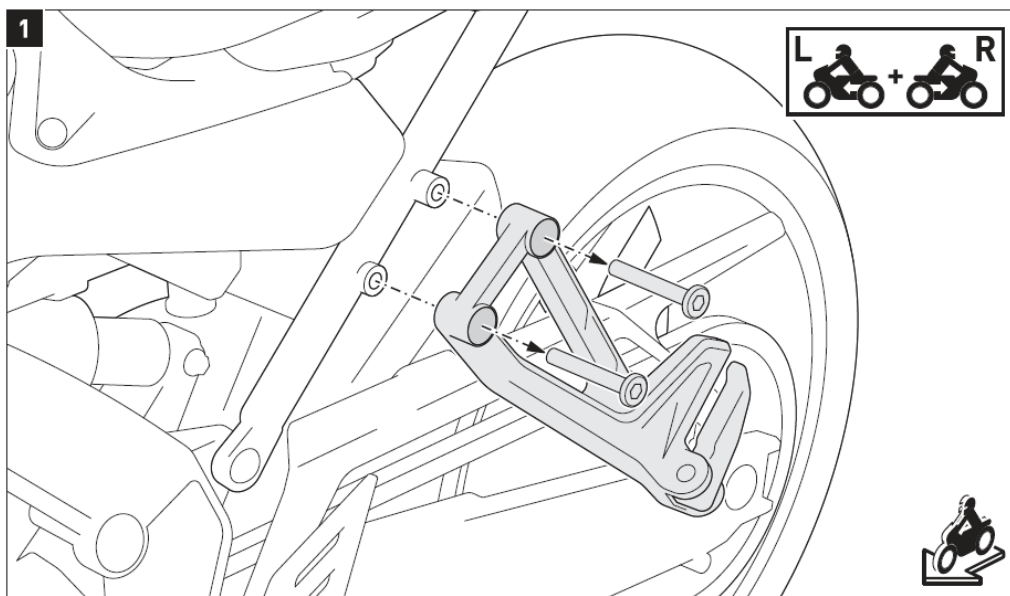
Schritt Step	Nr. No.	Art.-Nr. / Bezeichnung <sup>a</sup> Item No. / Description <sup>a</sup>	Part	Anzahl <sup>b</sup> Quantity <sup>b</sup>	N·m <sup>c</sup>
<b>2</b>	(1)	KFT.06.921.002L / R	Mounting Tab; left / right	2 /2	
	(2)	M8 x 20; DIN 6912	Hexagon Socket Screw, short head; black	4 /4	20
	(3)	ø 8,4; DIN 125	Washer; black	4 /6	
<b>3</b>	(4)	KFT.06.921.003L / R	Mounting Tab; left / right	2 /2	
	(5)	M8 x 45; DIN 912	Hexagon Socket Screw	4 /4	20
	(6)	ø 8,4; DIN 125	Washer	4 /4	
<b>4</b>	(7)	KFT.06.921.004	Mounting Tab	2 /2	
	(8)	M8 x 35; DIN 6912	Hexagon Socket Screw, short head; black	2 /2	20
	(9)	ø 8,4; DIN 125	Washer; black	2 /2	
	(10)	M8; DIN 6927	Lock Nut with Flange; black	2 /2	
<b>5</b>	(11)	KFT.06.525.005	Crossbar	1 /1	
	(12)	M6 x 55; DIN 912	Hexagon Socket Screw	2 /2	8
	(13)	ø 6,4; DIN 9021	Washer	4 /4	
	(14)	Ø 18 / ø 6,4 / h 31	Spacer	2 /2	
	(15)	M6; DIN 6927	Lock Nut	2 /2	
<b>6</b>	(16)	KFT.06.921.971.01 / 972.01	Side Carrier; left / right	2 /2	
	(17)	SV.ST.095.501.LK.02	Quick Fastener with Lock Washer	8 /8	

**Note:** a All measurements in millimeters. b The second by number indicates the total The quantity standard of the torque part in in this the table delivery. can be No used torque as long as specifications: it is within Use the the vehicle torque defined manufacturer's vehicle specifications. manufacturer!



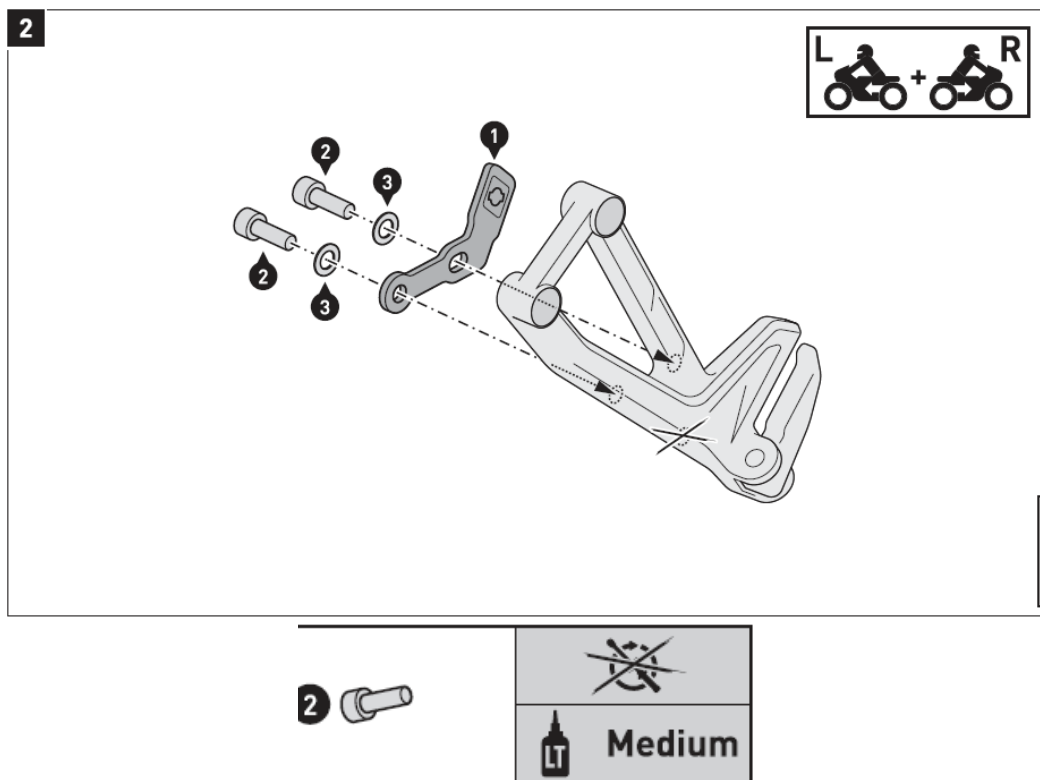
## MOUNTING

Remove the shown screws on both sides from the passenger footrest mounts.



Attach the mounting tabs (1) on both sides to the passenger footrest mounts.

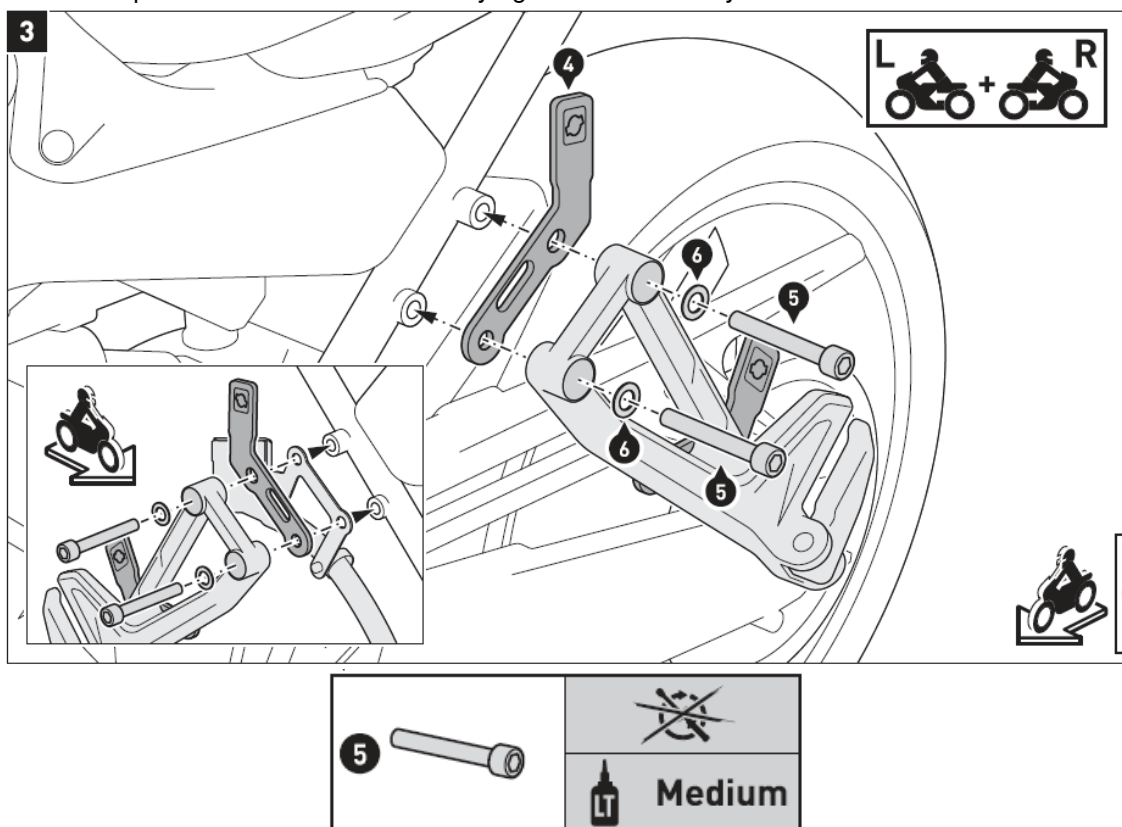
**ATTENTION:** Use liquid thread locker! Do not fully tighten the screws yet.



Attach the mounting tabs (4) on both sides with the passenger footrest mounts to the vehicle.

**NOTE:** Attach the brake fluid reservoir holder on the right side as shown in the detail drawing.

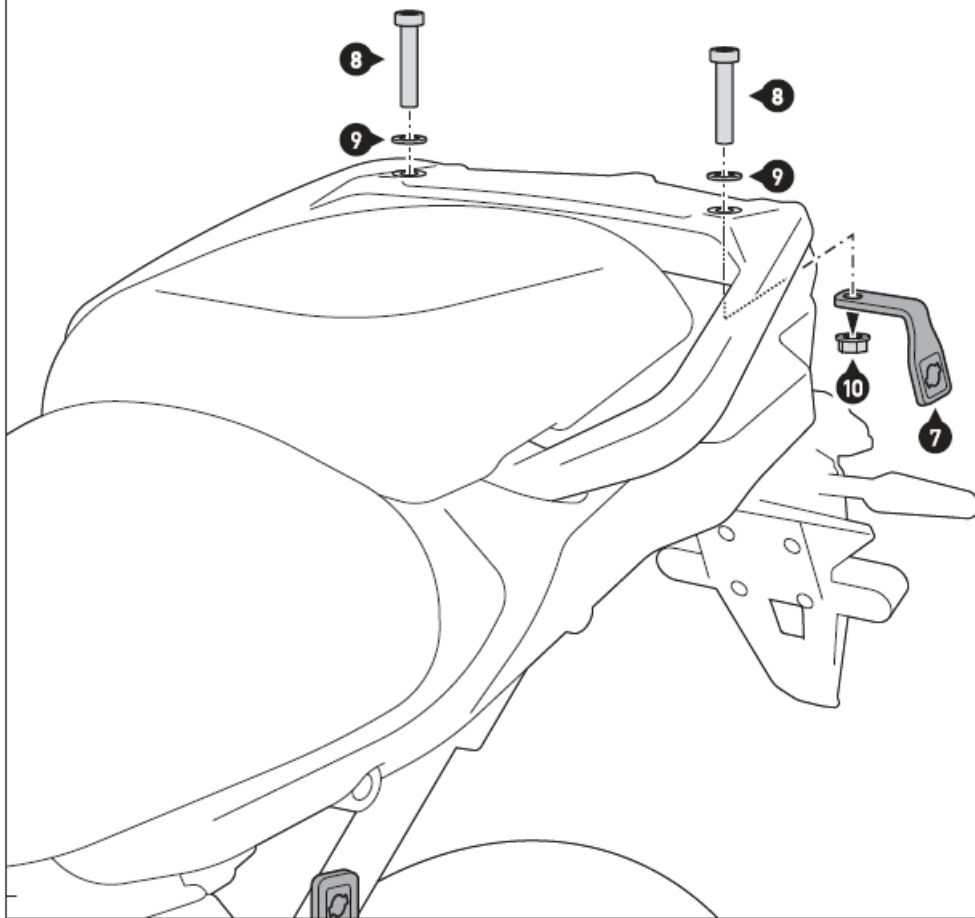
**ATTENTION:** Use liquid thread locker! Do not fully tighten the screws yet.



**NOTE:** When mounting the side carrier with the SW-MO TECH luggage rack, the screws [BJ are not required. Use the screws of the luggage rack instead. Attach the mounting tabs (7) on both sides to the luggage carrier.

**ATTENTION:** Use liquid thread locker! Do not fully tighten the screws yet.

4

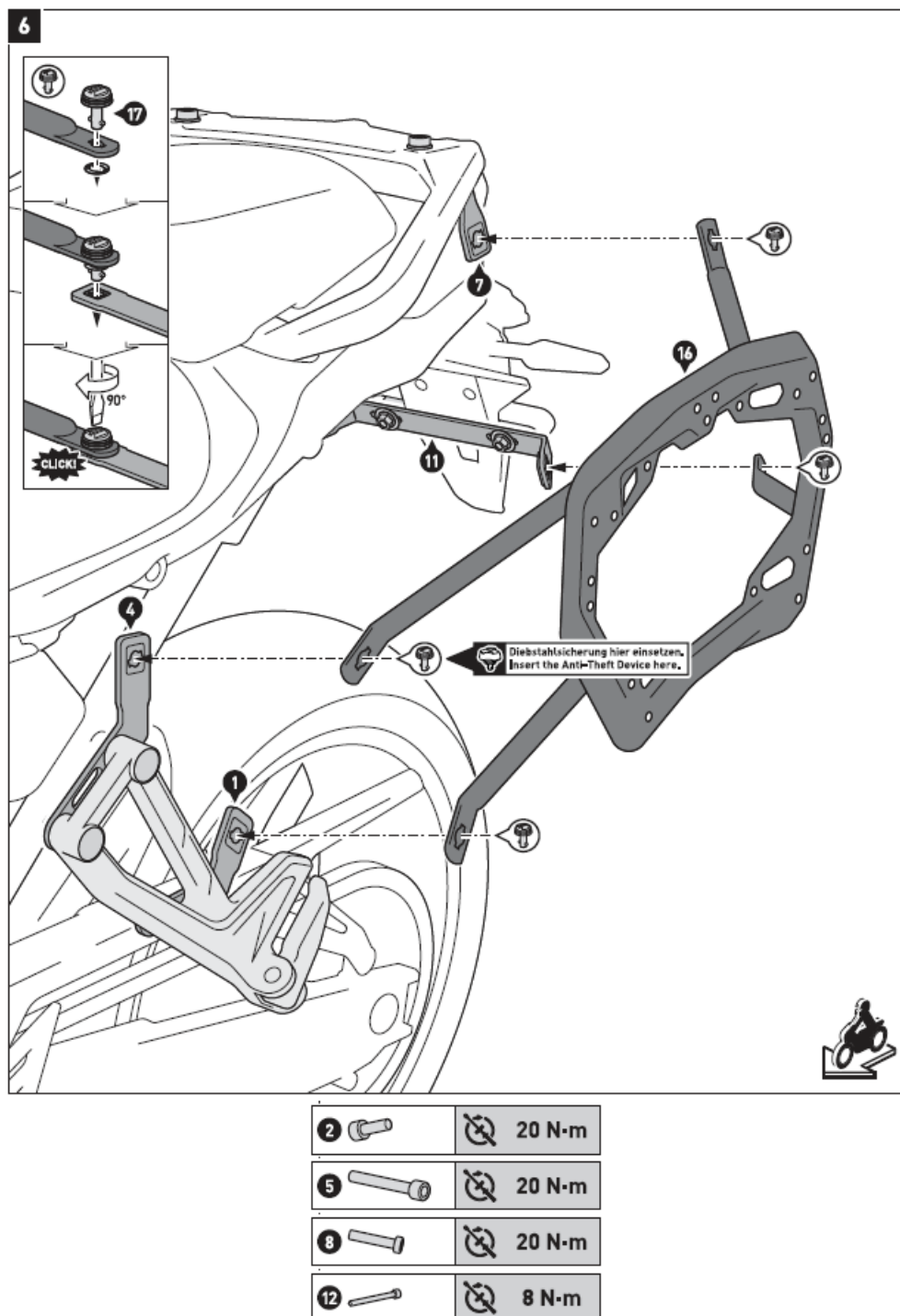


Attach the crossbar ( 11 ) to the license plate mount, as shown in the drawing.  
**ATTENTION:** Use liquid thread locker! Do not fully tighten the screws yet.



**NOTE:** The Anti-Theft Device is sold separately.





### Adapter kit for PRO side carrier -TRAX ADV/ION/EVO

Thank you for choosing this premium product from SW-MOTECH. Please visit our webshop for additional information, such as application charts and PDF mounting instructions. Any other documents that may be required (e.g. ABE certifications), are also available for download at our webshop. Installation and/or maintenance of this product require good technical understanding! For your own safety SW-MOTECH recommends having installation and/or servicing carried out by a specialist workshop! SW-MOTECH assumes no liability for damage caused by improper installation and/or maintenance work! Carefully follow all the directions given in the mounting instructions and pay attention to all relevant information in the vehicle manual during assembly. Nonconformance can lead to vehicle damage or even endanger the driver! These mounting instructions are written based on our current state of knowledge. Legal requirements for accuracy do not exist. This product was developed for vehicles in their factory setting. Compatibility with original accessory parts or other manufacturers' accessory parts is not guaranteed. Furthermore, BEFORE installing this product, make sure that all moving parts (e.g. the chain) are in the original state of maintenance. Installed accessories can change the driving behaviour and/or stability of your vehicle.

Observe the country-specific regulations concerning vehicle registration/ operation as well as TUV regulations if applicable. If required, register installed parts in the vehicle documents through an appropriate inspection authority.

**MOUNTING:** All parts and connections removed from the vehicle must be reinstalled in accordance with the vehicle manufacturers' specifications or replaced by parts delivered by SW-MOTEC. Secure all threads, unless otherwise specified, with medium-strength liquid thread locker.

**FUNCTION CHECK:** After installation make sure that all parts and connections previously removed are properly replaced. Also make sure that no moving parts are obstructed and no function of the vehicle is hindered in any way. Cables and hoses must not rub and/or be pinched. Before starting to ride, perform a comprehensive check of all functions. After the first 50 km and then at regular intervals, check the tightening torque of all screw connections and the proper fit of the product.

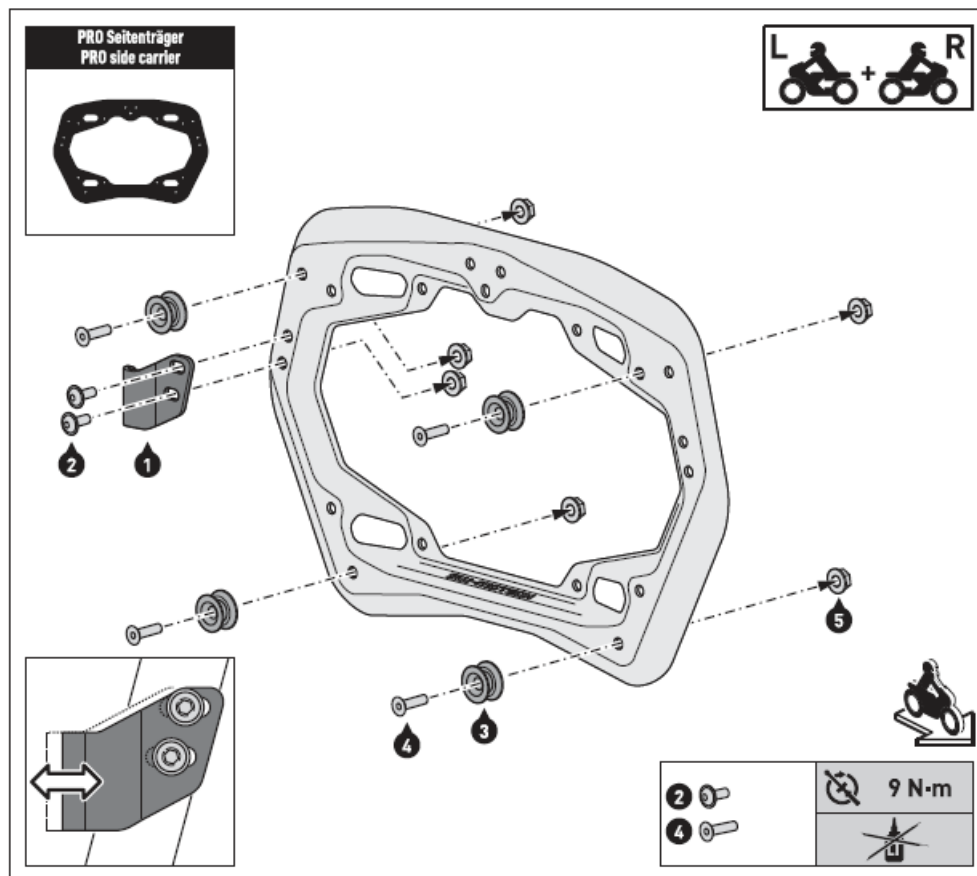
[illegible]

- All measurements in millimeters.
- The second number indicates the total quantity standard of the torque part in the this table delivery. can be
- No used as torque long as it specifications: is within the Use the vehicle torque defined manufacturer's by



**NOTE:** The illustration shows the mounting to the right PRO side carrier. Mount the parts to the left PRO side carrier in the same way as to the right PRO side carrier. Attach the shown parts to your PRO side carriers (sold separately). Tighten the screws as specified in the parts list.

**ATTENTION:** To ensure the proper fit of your TRAX ADV / EVO / ION side case, adjust the latch hook (1) over the elongated holes (see detail drawing)! Make sure that the side case's latch engages properly when mounted!



#### TRAX ADVENTURE ALU-BOX

Thank you for choosing this premium product from SW-MOTECH. ? Please visit our webshop for additional information, such as application charts and PDF mounting instructions. Any other documents that may be required (e.g. ABE certifications), are also available for download at our webshop. » [www.sw-motech.com](http://www.sw-motech.com) Installation and/or maintenance of this product require good technical understanding. For your own safety SW-MOTECH recommends having installation and/or servicing carried out by a specialist workshop. SW-MOTECH assumes no liability for damage caused by improper installation and/or maintenance work. Carefully follow all the directions given in the mounting instructions. Also pay attention to all relevant information in the vehicle manual during assembly. Nonconformance can lead to vehicle damage or even endanger the driver! Please keep the mounting instructions as reference. This product was developed for vehicles in their original condition. Compatibility with

original accessory parts or other manufacturers accessory parts is not guaranteed. Installed accessories can change driving behaviour and/or stability of your vehicle.

## GENERAL INFORMATION

Observe any country-specific legal or TOV regulations. If required, enter the installed parts into the vehicle documents with the appropriate inspection authority.

## SECURITY

**Please pay attention to the following information concerning the TRAX ADVENTURE ALU-BOX:**

The TRAX ADVENTURE ALU-BOX is designed exclusively for mounting on SW-MOTECH QUICK-LOCK side carriers, QUICK-LOCK adapter plate and STEEL-RACK adapter kit. Modifications made to the cases will void any warranty.

**ATTENTION:** Riding with TRAX ADVENTURE ALU-BOX may affect the motorcycle's driving and braking performance.

**ATTENTION:** TRAX ADVENTURE ALU-BOXES M & L must be used in pairs. Make sure the weight is evenly distributed between left and right side case.

**ATTENTION:** Maximum load: Please refer to the mounting instructions of the SW-MOTECH QUICK-LOCK side carrier, ALU-RACK or STEEL-RACK. Maximum speed with mounted cases: 130 km/h (80 mph).

**ATTENTION:** Make sure that the TRAX ADVENTURE ALU-BOX is properly attached to the particular adapter and fully engaged to all four mounting points! ALL latches of the TRAX ADVENTURE ALU-BOX must be locked BEFORE riding with the TraX ® EVO / TRAX ADV lock cylinder set (sold separately) and remain closed while riding. Improperly mounted cases run the risk of detaching during transport.

## CARE

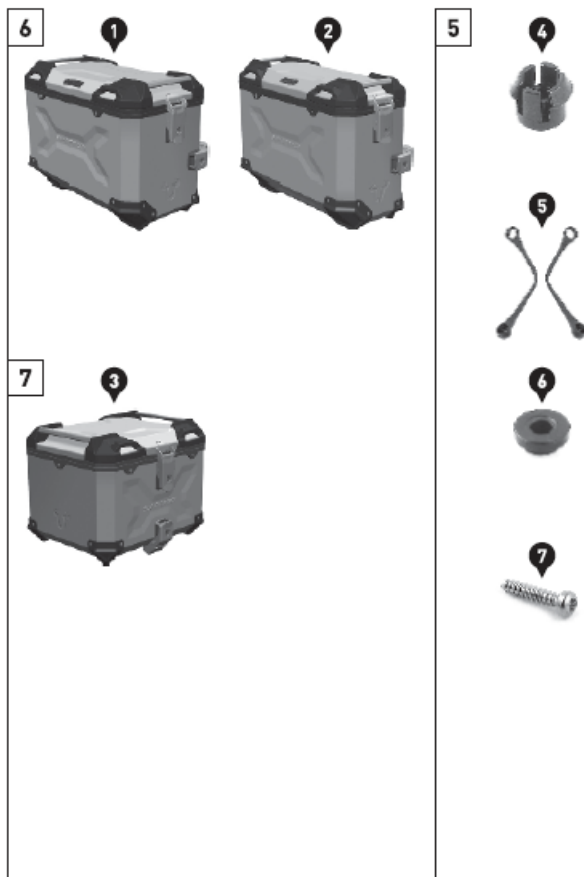
To clean the TRAX ADVENTURE ALU-BOX, use warm, soapy water and a soft, clean cloth. Rinse with clean water. Do NOT use strong cleaning agents, rough cleaning tools or high pressure washer!






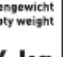
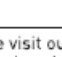
## PARTS LIST

[illegible]

The second number indicates the total quantity of the listed part in the delivery.

## TECHNICAL DETAILS



TECHNISCHE DETAILS / TECHNICAL DETAILS				
 <b>L</b>	 Maße/Size	Volumen Volume <b>45 l</b>	Eigengewicht Empty weight <b>5,4 kg</b>	
	 <b>M</b>	 Maße/Size	Volumen Volume <b>37 l</b>	Eigengewicht Empty weight <b>5,1 kg</b>
	 <b>TC</b>	 Maße/Size	Volumen Volume <b>38 l</b>	Eigengewicht Empty weight <b>4,6 kg</b>
				Kapazität Capacity  <b>1x</b>

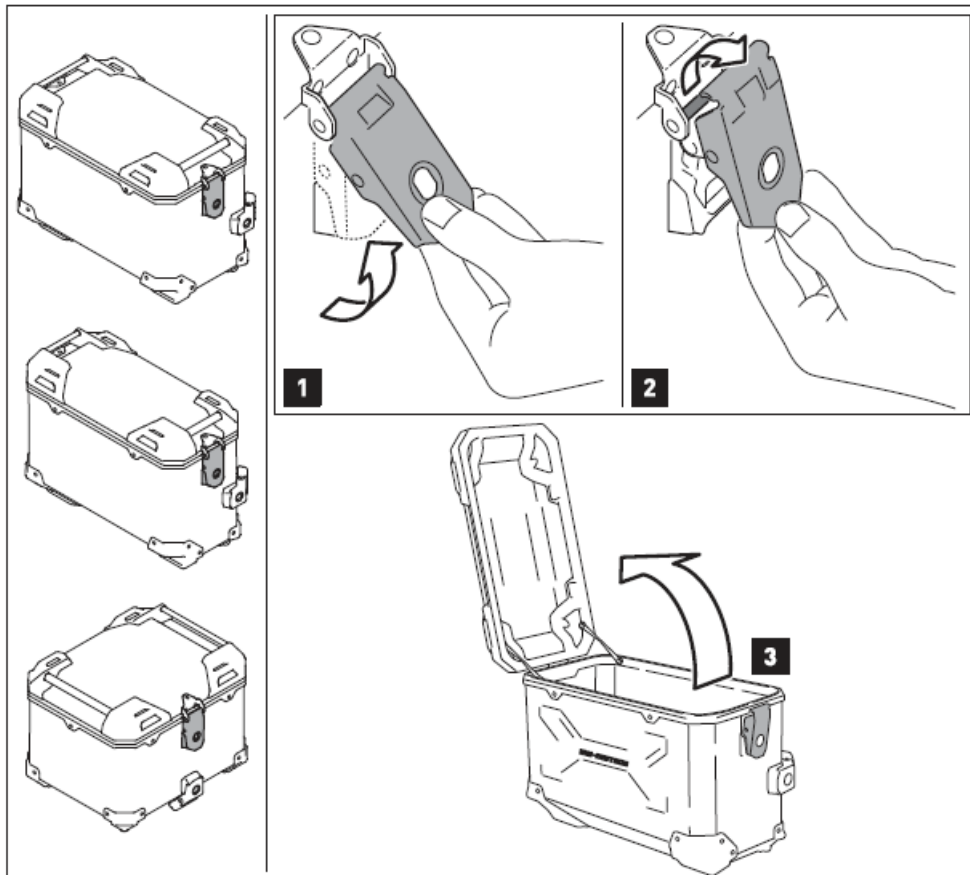
Please visit our harts and webshop for compatible application accessories.

## LID AND LOCK CYLINDER SET

### Open the lid

(TRAX ADV M / L / topcase)

1. Pull the latch of the lid upwards
2. and remove it from the latch bar.
3. Open the lid.



### Insertion of the Trax® EVO / TRAX ADV lock cylinder set \*

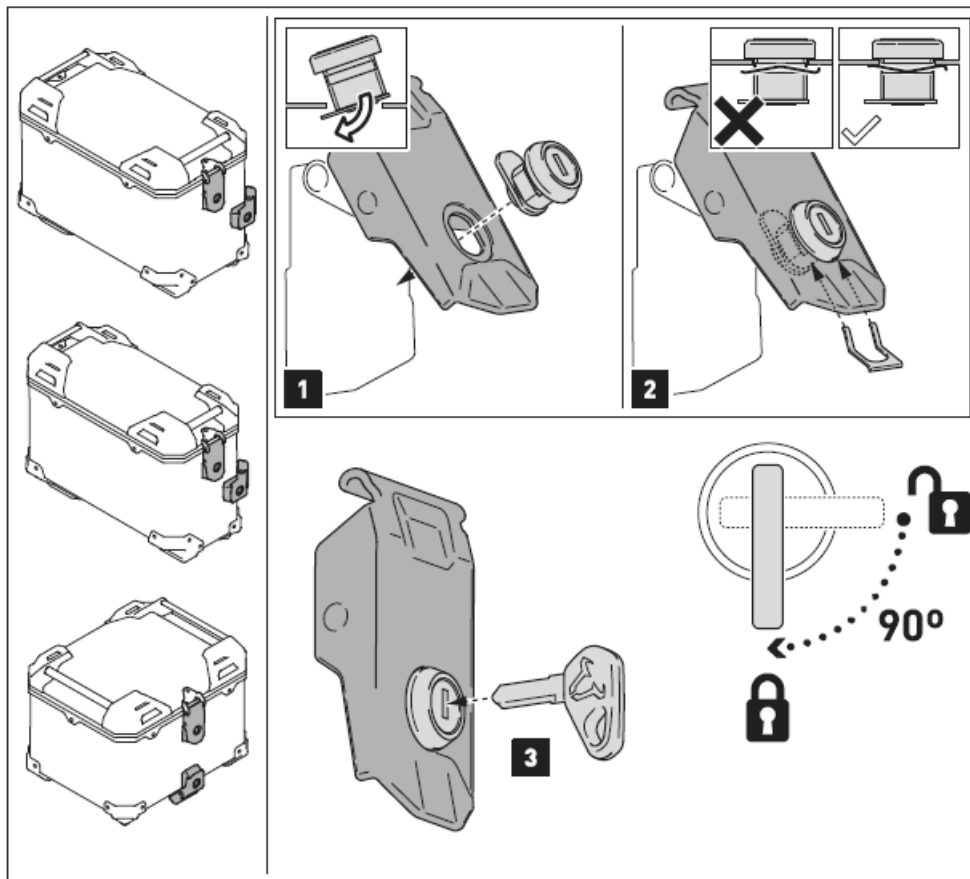
(TRAX ADV M / L / Topcase)

1. Insert the lock cylinders into the latches .
2. Secure the lock cylinders with the clamping plates .

**ATTENTION:** Pay attention to the correct alignment of the clamping plates (as shown in the detail drawings).

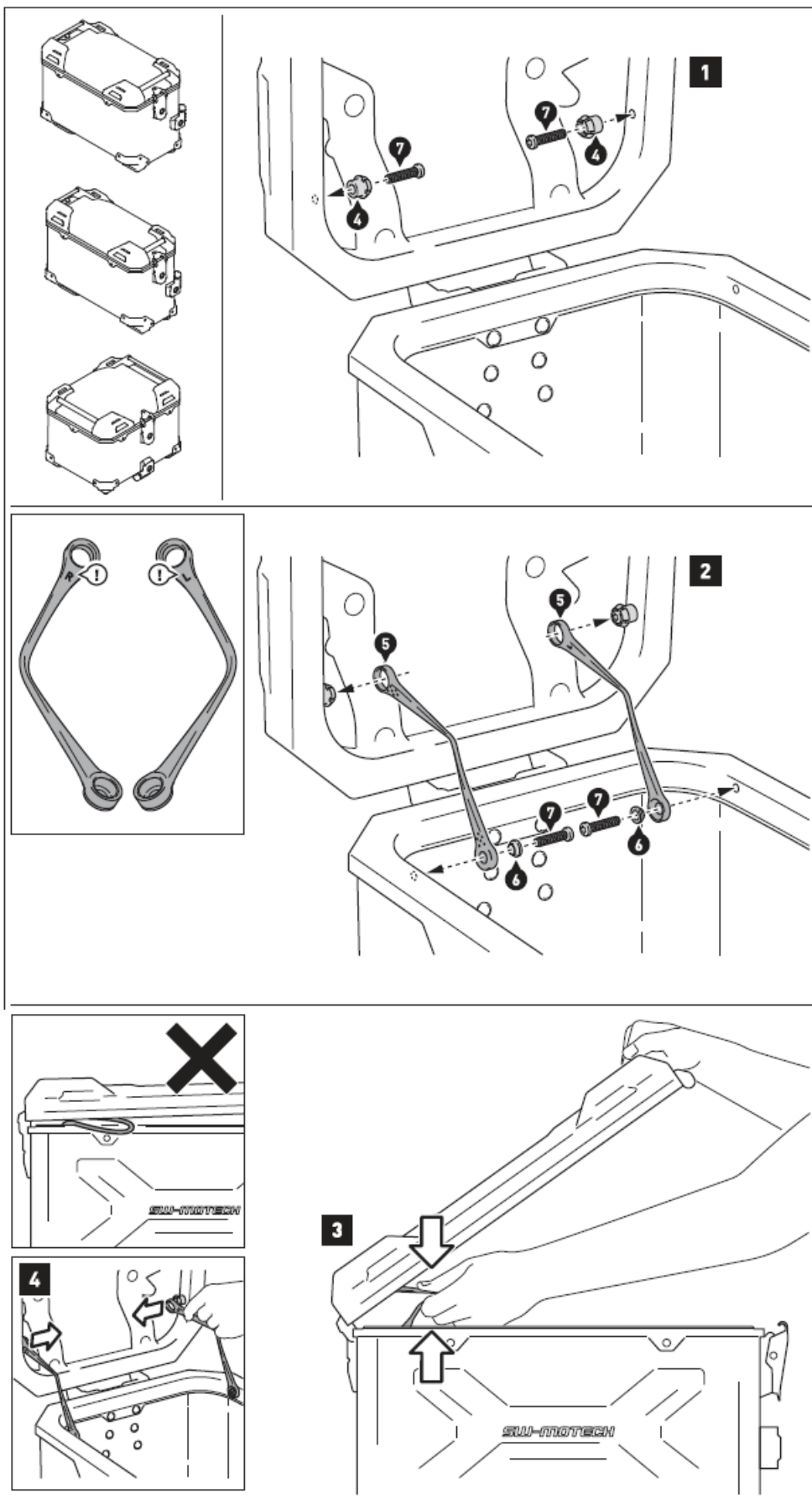
3. Insert the keys into the lock cylinders; open or close the lock cylinder as shown in the schematic drawing.

**ATTENTION:** Use for lubrication graphite powder ONLY! Sold se aratel .



### Mounting the lid limiters [TRAX ADV M / L / top case)

1. Open the lid. Attach the snap-fit (4) with the shown parts at the lid frame. Tighten the screws as specified in the parts list.
2. Attach the lid limiters (5) with the shown parts at the case frame.  
**NOTE:** Pay attention to left-right specifications for the limiters (in driving direction). Tighten the screws as specified in the parts list. Press the lid limiters onto the snap-fits.
3. Before closing the lid for the first time, the lid limiters must be compressed as shown in the drawing. While closing the lid, make sure that the lid limiters are not pinched between lid and case.
4. To remove the lid from the case (as shown on page 51, remove the lid limiters from the snap-fits first.



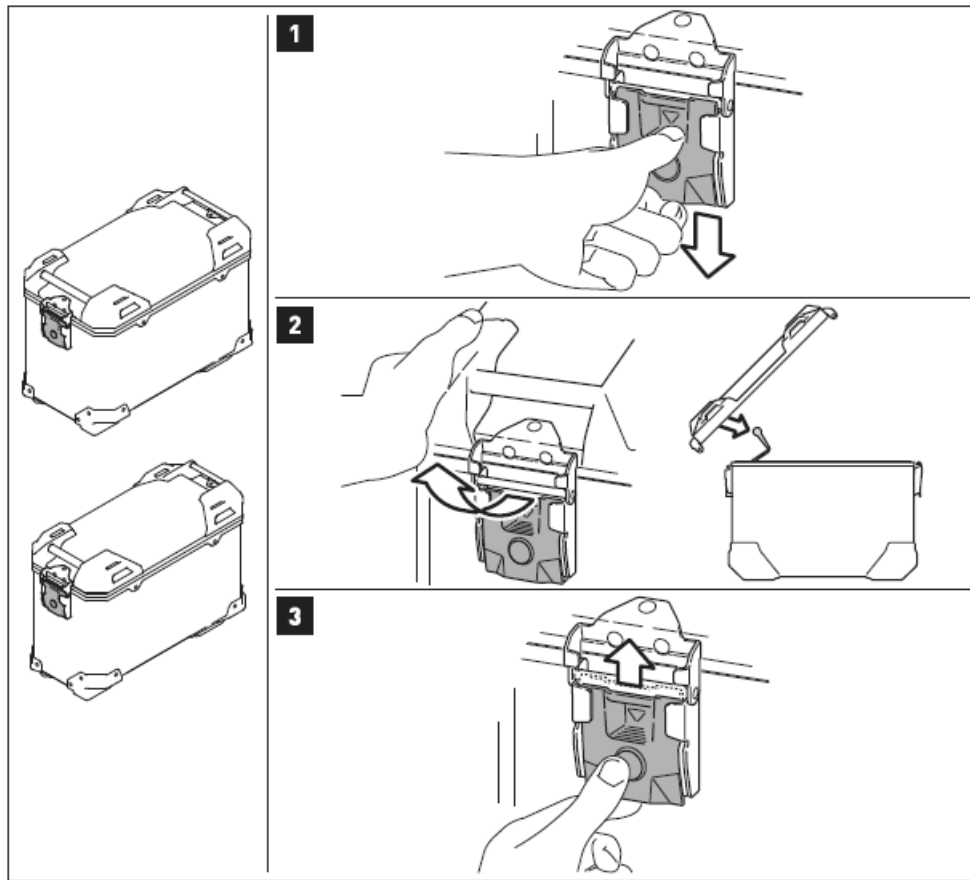
## Removing the lid (TRAX ADVENTURE M / LI)

1. Press the quick release fastener down until it clicks into place and the button pops out.
2. Then remove the lid from the case.



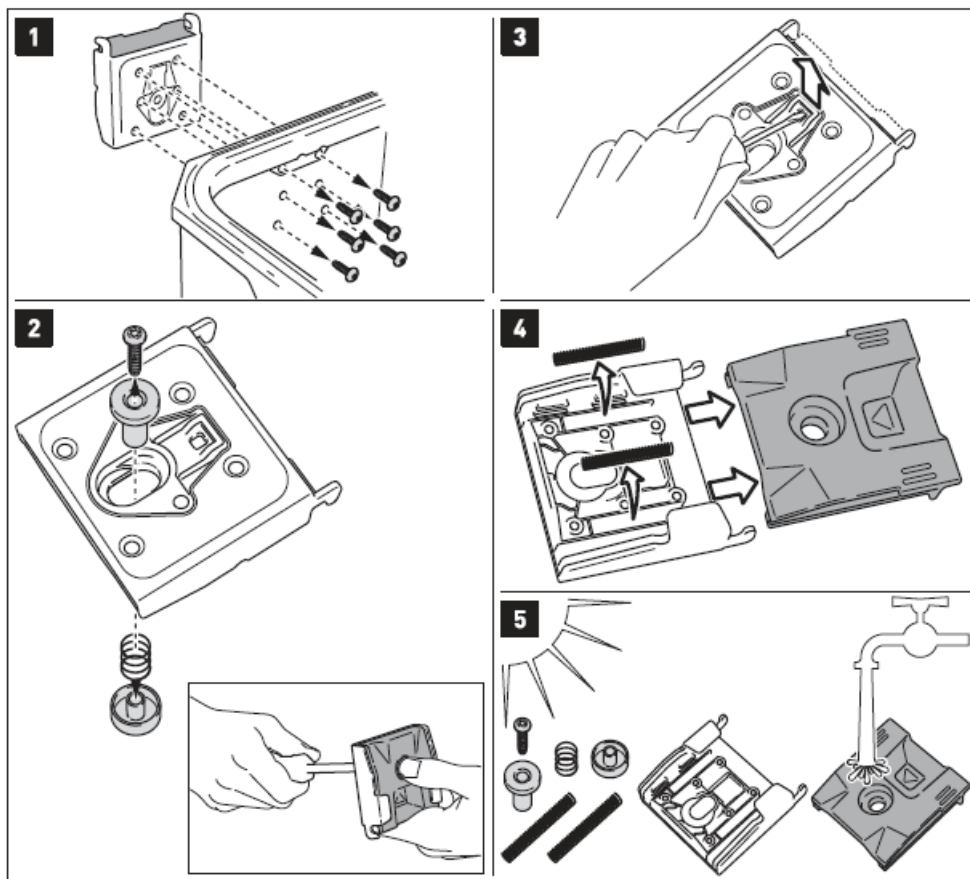
**NOTE:** If you have installed the lid limiters (5), they must be detached before removing the lid (as shown on page 4).

3. Press the button of the quick release fastener to lock the replaced lid in place. Make sure that the quick release fastener snaps above.



#### **Maintenance and cleaning of the quick release fastener** (TRAX ADVENTURE M / LI)

1. Loosen the six screws on the inner side of the case and remove the quick release fastener.
2. Loosen the screw of the button (fix with thumb and index finger).
3. Loosen the shown clip carefully and .. .
4. remove the quick release fastener and springs from the mounting plate.
5. Clean the components with clean water and let it air dry. Reattach all arts in reversed order.



#### am QUICK-LOCK Koffertrager! Attachment of TRAX ADVENTURE ALU-BOX M & L

1. Lead the four openings of the mounting rails onto the locating bolts of the mounted QUICK-LOCK adapter kit.  
Then press the TRAX ADVENTURE ALU-BOX slightly downward, until it properly rests on QUICK-LOCK side carrier.

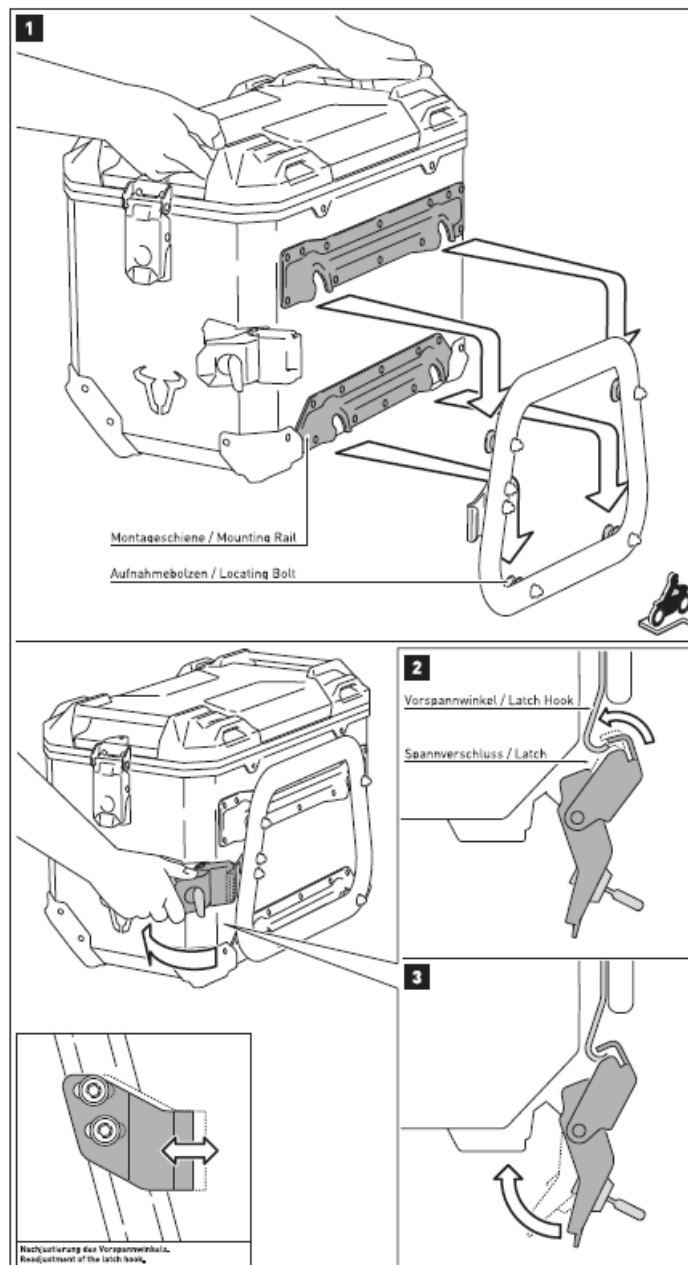
**ATTENTION:** Make sure that all four locating bolts rests on at the same time.

2. Place the latch over the latch hook and ...

3. close the latch; check the proper fit of the TRAX ADVENTURE ALU-BOX on the QUICK-LOCK side carrier.

**ATTENTION:** Make sure the closed latch is under sufficient tension! If not the latch hook must be readjusted!

**ATTENTION:** Secure the TRAX ADVENTURE ALU-BOX with the separately available Trax® EVO / TRAX ADVENTURE lock cylinder set at the QUICK-LOCK side carrier before riding!



## Attachement of TRAX ADVENTURE ALU-BOX M & L

1. Lead the four openings of the mounting rail onto the locating bolts of the mounted QUICK-LOCK adapter plate/ STEEL-RACK adapter kit. Then press the TRAX ADVENTURE ALU-BOX slightly forward, until it properly rests on QUICK-LOCK adapter plate/ STEEL-RACK adapter kit.

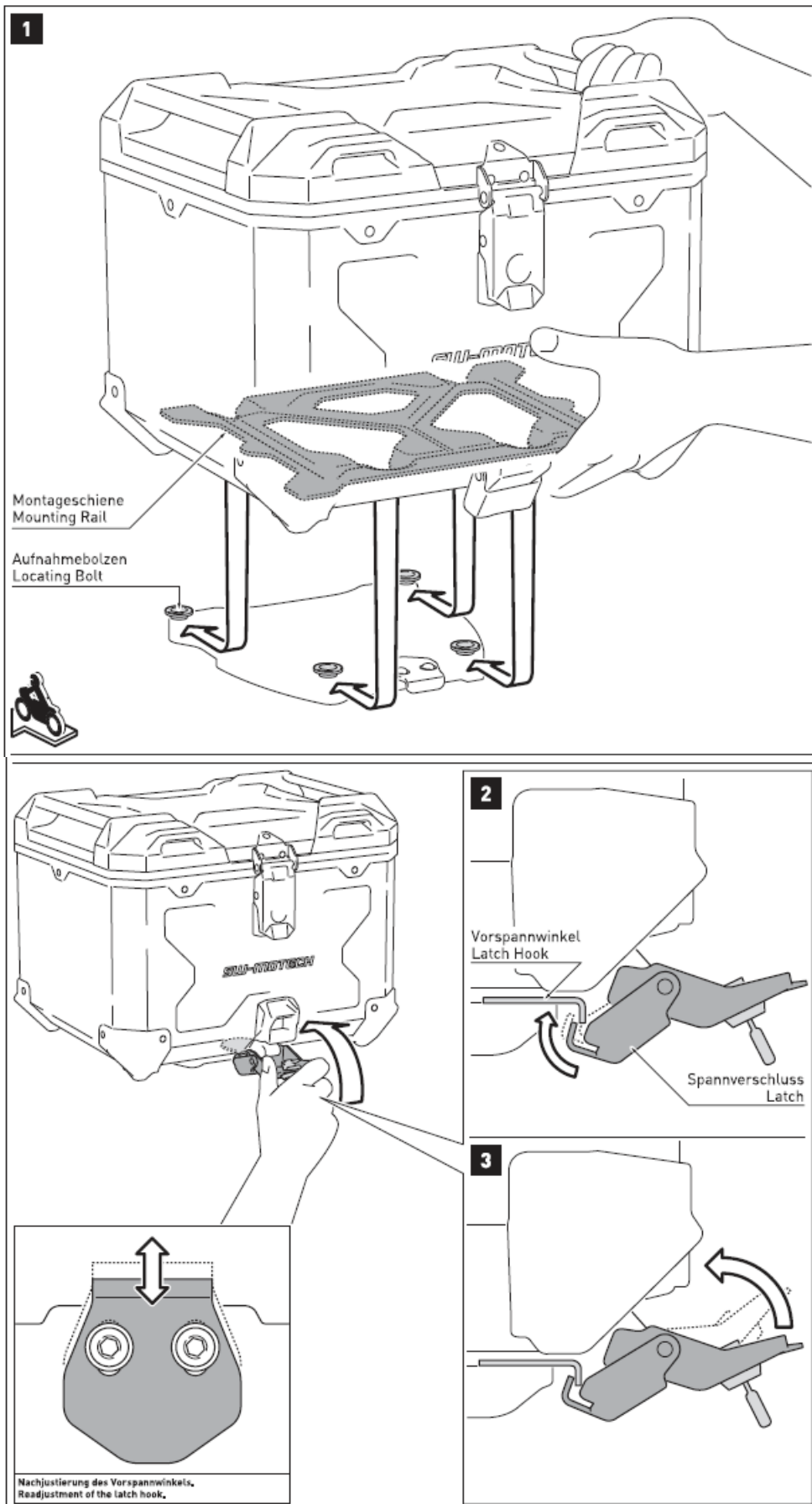
**ATTENTION:** Make sure that all four locating bolts rests on at the same time.

2. Place the latch over the latch hook and ...

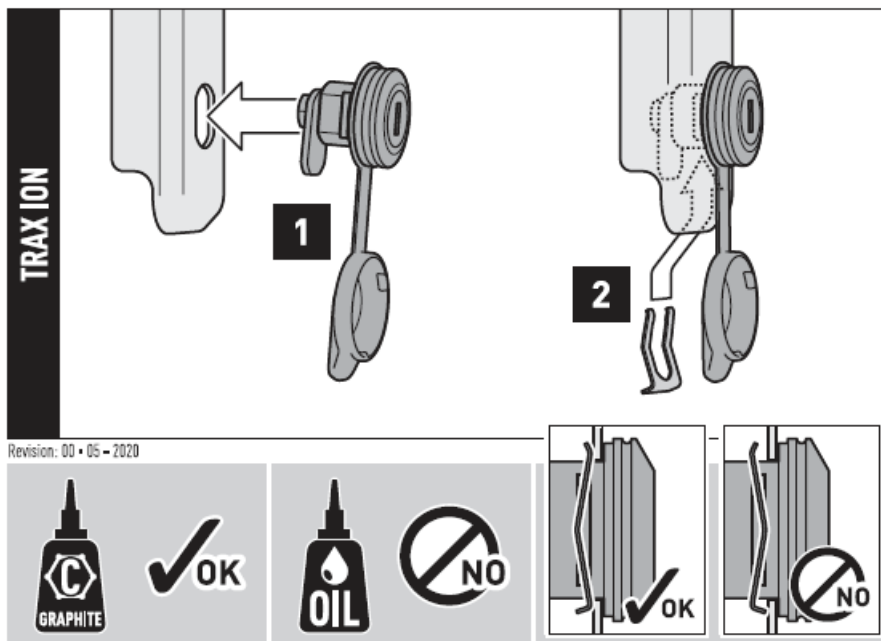
3. close the latch; check the proper fit of the TRAX ADVENTURE ALU-BOX on the QUICK-LOCK Adapter Plate/ STEEL-RACK Adapter Kit.

**ATTENTION:** Make sure the closed latch is under sufficient tension! If not the latch hook must be readjusted!

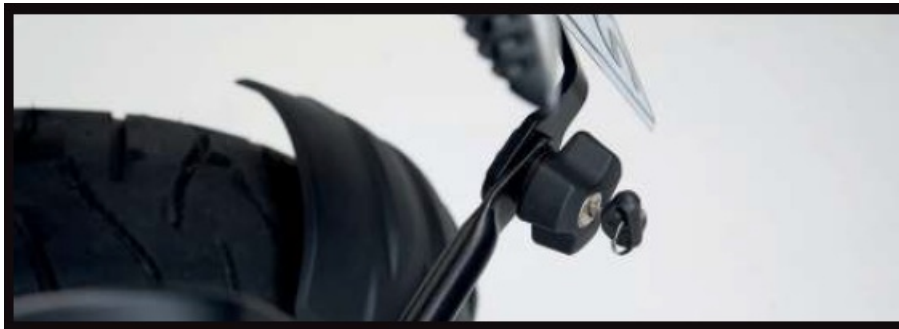
**ATTENTION:** Secure the TRAX ADVENTURE ALU-BOX with the separately available Trax® EVO / TRAX ADVENTURE lock cylinder set at the QUICK-LOCK adapter plate/ STEEL-RACK adapter kit before riding!



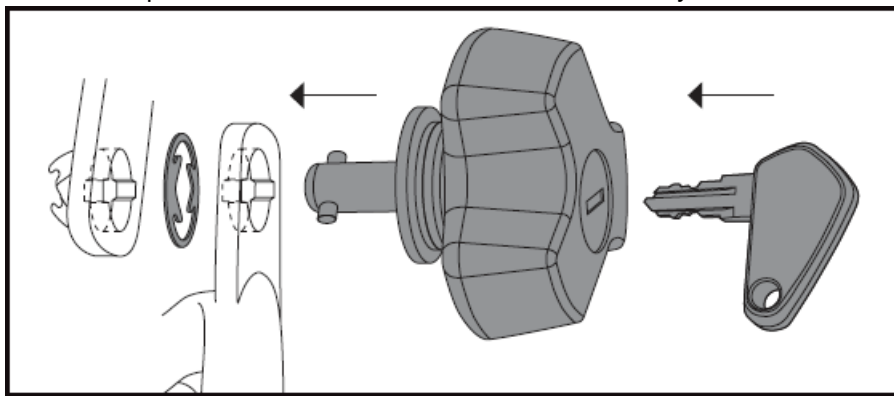
Anti-theft protection for PRO side carrier



### Anti-theft protection for PRO side carrier



Each of this pair of lockable side carrier fasteners can be used to replace a standard fastener on a PRO side carrier in order to provide theft protection. The set includes two matched keys.



**Attention:** To maintain locks use graphite powder only.



**Manuals+,**